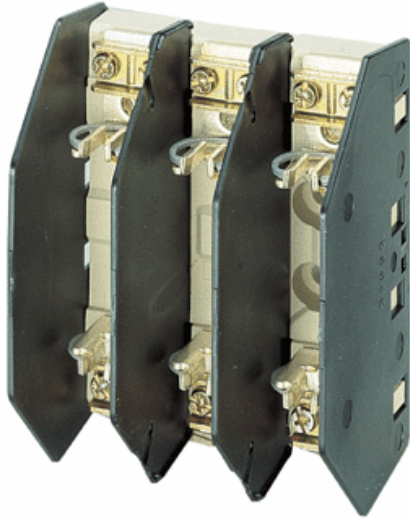


Type: **GS2**
 Article No.: **045725**



3-pole

Ordering information

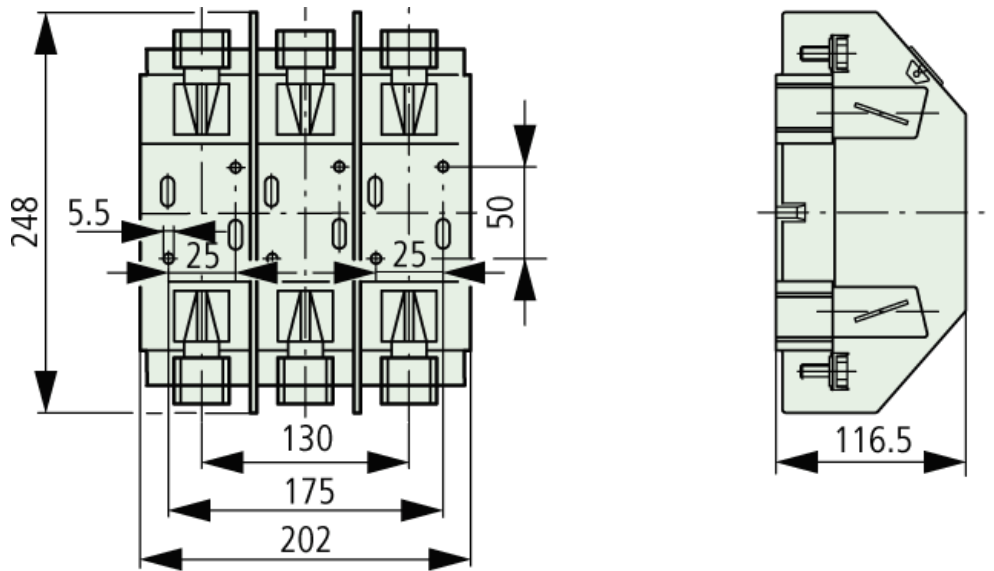
Rated operational current	I_e	A	400
Max. fuse 500 V		A	400
Max. fuse 690 V		A	315
Max. fuse Frame size			NH2

General

Standards			IEC/EN 61131-3 VDE 0660 Part 107
Climatic proofing			Damp heat, constant, to IEC 60068--2--3 Damp heat, cyclical, to IEC 60068--2--30
Ambient temperature		°C	-25 to +55
Altitude		m	Max. 2000
Mounting position			Vertical, horizontal
Oversvoltage category/pollution degree			III/3
Degree of protection, from the front			
Operational state			IP20
Front cover open			IP10
Direction of incoming supply			As required
Lifespan, mechanical	Operations	$\times 10^6$	1700
Weight		kg	3,1

Contacts			
Rated operational voltage	U_e	V AC	500
Rated operational voltage	U_e	V DC	230
Rated operational current	I_e	A	400
Rated frequency		Hz	40 – 60
Rated conditional short-circuit current AC		A	50
Rated conditional short-circuit current DC		kA _{rms}	25
Utilization category AC-22B			
Rated making capacity		A	1200
Rated breaking capacity		A	1200
Utilization category DC-21B			
Rated making capacity		A	600
Rated breaking capacity		A	600
Lifespan, electrical	Operations		200
Heat dissipation at I_{th} AC, without NH-SE			27
Heat dissipation at I_{th} DC, without NH-SE			18
Rated insulation voltage	U_i	V	750
Max. fuse			
Frame size			NH2
Max. rated current gG/g		A	400
Max. admissible heat dissipation NH-SE		W	34
Terminal capacity			
Box terminal			
Stranded		mm ²	25 – 240
Flat conductor	Number of segments × width × thickness	mm	10 × 16 × 0.8
Max. tightening torque		Nm	23
Dimensions			

Dimensions



Moeller GmbH, Hein-Moeller-Str. 7-11, D-53115 Bonn
E-Mail: catalog@moeller.net, Internet: www.moeller.net, <http://catalog.moeller.net>
Copyright 2006 by Moeller GmbH. Subject to modifications. HPL-C2006GB-INT V2.3