

80 mm Diameter Incremental Rotary Encoders

E80 Series

PRODUCT MANUAL

Be sure to follow the instructions and precautions in the instruction manual, other manuals, and the Autonics website.

The specifications, dimensions, and other information in this document are subject to change without notice for product improvement. Certain models may be discontinued without notice.

Safety Precautions

- 'Safety Precautions' are provided to ensure safe and proper use of the product and to prevent accidents or hazards. Please make sure to follow them carefully.
- ⚠ symbol indicates a caution, warning of potential hazards under certain conditions.

⚠ Warning Failure to follow instructions may result in serious injury or death.

- 01. Fail-safe device must be installed when using the product in applications that may cause serious injuries or property loss. (E.g. nuclear control systems, medical equipment, ships, vehicles, railroads, aircraft, combustion devices, safety devices, security systems, disaster prevention devices, etc.)**
Failure to do so may result in personal injury, property loss or fire.
- 02. Do not use or store the product in environments containing flammable, explosive, or corrosive gases, or in places exposed to high humidity, direct sunlight, radiant heat, vibration, shock, or salt.**
Failure to do so may result in explosion or fire.
- 03. Install the product on a device panel before use.**
Failure to do so may result in fire.
- 04. Do not connect, repair, or inspect the product while connected to a power source.**
Failure to do so may result in fire.
- 05. Check the connection diagram before wiring.**
Failure to do so may result in fire.
- 06. Do not make any unauthorized modifications to the product.**
Failure to do so may result in fire.

⚠ Caution Failure to follow instructions may result in injury or product damage.

- 01. Use the product within its rated specifications and performance limits.**
Failure to do so may result in fire or product damage.
- 02. Do not short-circuit the load.**
Failure to do so may result in fire.
- 03. Do not use the product near devices that generate strong magnetic fields or electrical noise, or in environments with strong alkaline or acidic substances.**
Failure to do so may result in product damage.

Cautions During Use

- Make sure to follow the instructions in 'Cautions During Use'.
Failure to do so may result in unexpected accidents.
- Power input should be supplied from an isolated and limited voltage/current source, or from a Class 2 or SELV power supply..
- When using noise-generating devices (e.g. switching regulators, inverters, servo motors, etc.), ground the shielded wire to F.G.
- Ground the shielded wire to F.G.
- When supplying power with an SMPS, ground the F.G. terminal and connect a noise suppression capacitor between the 0 V and F.G. terminals.
- To prevent surges and inductive noise, separate the wiring from high-voltage and power lines, and keep wiring lengths as short as possible.
- For line driver models, always use twisted-pair cables with sealing, and use receivers suitable for RS-422A communication on the receiver side.
- When extending wiring, check the cable type and response frequency, as line resistance and line-to-line capacitance may cause increased residual voltage or waveform distortion.
- This product may be used in the following environmental conditions.
 - Indoors (within rated environmental performance specifications)
 - Altitude: up to 2,000 m
 - Pollution Degree 2
 - Installation Category II

Cautions During Installation

- Install the product within the rated specifications in recommended environments.
- When using a wrench to secure the product or coupling, tighten with a torque less than 0.15 N·m.
- After securing the product and cable, do not pull with a force exceeding 30N.

Ordering Information

For reference only. The actual product does not support all combinations. To check all supported models, please refer to the Autonics website.

E80 ① ② - ③ - ④ - ⑤ - ⑥ - ⑦

① Shaft type

H: Hollow type

② Shaft inner diameter

30: Ø 30 mm
32: Ø 32 mm

③ Resolution

Number: Refer to resolution in 'Specifications'

④ Output phase

3: A, B, Z
6: A, \bar{A} , B, \bar{B} , Z, \bar{Z}

⑤ Control output

T: Totem-pole output
N: NPN open collector output
V: Voltage output
L: Line driver output

⑥ Power supply

5: 5 VDC \pm 5%
24: 12 - 24 VDC \pm 5%

⑦ Connection

No mark: Radial cable type
C: Radial cable connector type

Product Components

- Product (+ bracket)
- Bolt \times 4
- Instruction manual

Sold Separately

- M17 connector cable: CID6S-□, CID9S-□

Connections

- Unused wires must be insulated.
- The metal case and shielded wire of encoders must be grounded (F.G.).
- F.G. (Frame Ground) must be grounded separately.

■ Totem-Pole / NPN Open Collector / Voltage Output

Pin	Color	Function	Pin	Color	Function
1	Black	OUT A	4	Brown	+V
2	White	OUT B	5	Blue	GND
3	Orange	OUT Z	6	Shield	F.G.

• M17 6-pin layout



■ Line Driver Output

Pin	Color	Function	Pin	Color	Function
1	Black	OUT A	5	White	OUT B
2	Red	OUT \bar{A}	6	Gray	OUT \bar{B}
3	Brown	+V	7	Orange	OUT Z
4	Blue	GND	8	Yellow	OUT \bar{Z}
—	—	—	9	Shield	F.G.

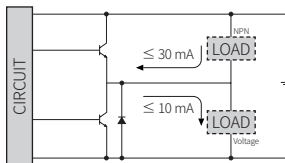
• M17 9-pin layout



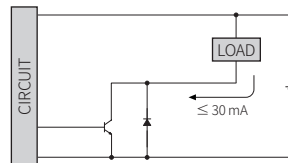
Circuit Diagram

- Output circuits are identical for all output phases.

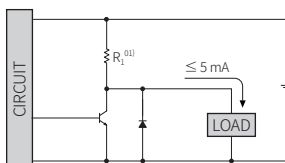
■ Totem-Pole Output



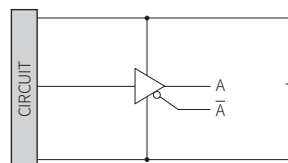
■ NPN Open Collector Output



■ Voltage Output



■ Line Driver Output

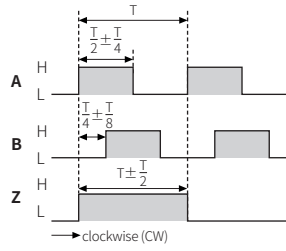


01) [Power supply 12 - 24 VDC \pm 5% model] 4.7 k Ω
[Power supply 5 VDC \pm 5% model] 820 Ω

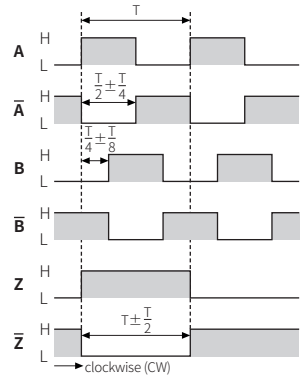
Output Waveform

- The rotation direction is based on facing the shaft, and it is clockwise (CW) when rotating to the right.
- Phase difference between A and B: $\frac{T}{4} \pm \frac{T}{8}$ (T = 1 cycle of A)

■ Totem-Pole / NPN Open Collector / Voltage Output



■ Line Driver Output



Specifications

Model	E80H□-□-3-T-□-□	E80H□-□-3-N-□-□	E80H□-□-3-V-□-□	E80H□-□-6-L-5-□
Resolution	60 / 100 / 360 / 500 / 512 / 1,024 / 3,200 PPR models			
Control output	Totem-pole output	NPN open collector output	Voltage output	Line driver output
Output phase	A, B, Z	A, B, Z	A, B, Z	A, \bar{A} , B, \bar{B} , Z, \bar{Z}
Sink current	≤ 30 mA	≤ 30 mA	-	≤ 20 mA
Residual voltage	≤ 0.4 VDC \pm	≤ 0.4 VDC \pm	≤ 0.4 VDC \pm	≤ 0.5 VDC \pm
Source current	≤ 10 mA	-	≤ 5 mA	≤ -20 mA
Output voltage (5 VDC \pm)	≥ (V _{CC} - 2.0) VDC \pm	-	≤ ($\frac{R_L}{R_L + R_1} \times V_{CC}$)	≥ 2.5 VDC \pm
Output voltage (12 - 24 VDC \pm)	≥ (V _{CC} - 3.0) VDC \pm	-	VDC \pm ⁰¹⁾	≥ (V _{CC} - 3.0) VDC \pm
Response speed ⁰²⁾	≤ 1 μ s			
Max. response freq.	200 kHz			
Max. allowable revolution ⁰³⁾	3,600 rpm			
Starting torque	≤ 0.02 N m			
Inertia moment	≤ 800 g · cm ² (8 × 10 ⁻⁵ kg · m ²)			
Allowable shaft load	Radial: ≤ 5 kgf, Thrust: ≤ 2.5 kgf			
Unit weight	≈ 560 g			
Certification	CE ENEC ⁰⁴⁾	CE ENEC	CE ENEC	ENEC

01) The output voltage varies depending on load resistance (R_L = load resistance).

02) Based on cable length: 2 m, I sink: 20 mA

03) Select resolution to satisfy Max. allowable revolution ≥ Max. response revolution
[max. response revolution (rpm) = $\frac{\text{max. response frequency}}{\text{resolution}} \times 60 \text{ sec}$]

04) Certifications may differ depending on the model. Check the Autonics website for specific certification information.

Model	E80H□-□-3-T-□-□	E80H□-□-3-N-□-□	E80H□-□-3-V-□-□	E80H□-□-6-L-5-□
Power supply	5 VDC \pm 5% (ripple P-P: ≤ 5%) / 12 - 24 VDC \pm 5% (ripple P-P: ≤ 5%) model			
Current consumption	Totem-pole, NPN open collector, Voltage output: ≤ 80 mA (no load) Line driver output: ≤ 50 mA (no load)			
Insulation resistance	≥ 100 M Ω (500 VDC \pm megger)			
Dielectric strength	Between charging part and case: 750 VAC \sim 50 / 60 Hz for 1 min			
Vibration resistance	1 mm double amplitude at frequency 10 to 55 Hz in each X, Y, Z direction for 2 hours			
Shock resistance	≤ 75 G			
Ambient temp.	-10 to 70 °C, storage: -25 to 85 °C (no freezing or condensation)			
Ambient humidity	35 to 85%RH, storage: 35 to 90%RH (no freezing or condensation)			
Protection rating	IP50 (IEC standard)			
Connection	Radial cable type / cable connect or type models			
Cable specification	Ø 5 mm, 5-wire (Line driver output: 8-wire), shielded cable type: 2 m, cable connector type: 250 mm			
Wire specification	AWG24 (0.08 mm, 40-core), insulator diameter: Ø 1 mm			
Connector specification	Totem-pole, NPN open collector, Voltage output: M17 6-pin plug type Line driver output: M17 9-pin plug type			

