



**Door coupling rotary handle, red-yellow, max 60mm shaft, size 2**

**Part no.** NZM2-XTVDVR-60  
**Catalog No.** 271513



Similar to illustration

## Delivery program

|  |  |  |
|--|--|--|
| Product range  |  | Accessories  |
| Accessories  |  | Door coupling rotary handle  |
| Standard/Approval  |  | UL/CSA, IEC  |
| Construction size  |  | NZM2   |
| Description  |  | Door coupling rotary handle for operating the switch through a closed control panel door   |
| Function   |  | Red-yellow for emergency switching off   |
| Protection class   |  | IP66<br>UL/CSA Type 4X, Type 12  |
| Locking facility   |  | lockable on the handle on the switch using up to 3 padlocks<br>With door interlock   |
| Door interlock   |  | Not defeated in the locked OFF position.<br>Can be modified in the unlocked ON position<br>Can be modified such that it can be defeated from the outside using a screwdriver<br>Door can be opened in OFF  |
| Project planning information   |  | Complete including rotary drive and coupling parts<br>Extension shaft additionally required.<br>For maximum shaft length 60 mm<br>Without shaft support<br>Cannot be combined with NZM...-XDZ additional handle<br>External warning plate/designation label can be clipped on. |
| For use with   |  | NZM2(-4), PN2(-4), N(S)2(-4)   |
| lockable   |  | double   |
| <b>Notes</b>   |  |  |
| Circuit-breaker can also be installed in a lying position 90 ° left/right, with the handle still in the same position. |  |  |

## Design verification as per IEC/EN 61439

|  |  |  |
|--|--|--|
| IEC/EN 61439 design verification   |  |  |
| 10.2 Strength of materials and parts   |  |  |
| 10.2.2 Corrosion resistance  |  | Meets the product standard's requirements.   |
| 10.2.3.1 Verification of thermal stability of enclosures   |  | Meets the product standard's requirements.   |
| 10.2.3.2 Verification of resistance of insulating materials to normal heat   |  | Meets the product standard's requirements.   |
| 10.2.3.3 Verification of resistance of insulating materials to abnormal heat and fire due to internal electric effects |  | Meets the product standard's requirements.   |
| 10.2.4 Resistance to ultra-violet (UV) radiation   |  | Meets the product standard's requirements.   |
| 10.2.5 Lifting   |  | Does not apply, since the entire switchgear needs to be evaluated.   |
| 10.2.6 Mechanical impact   |  | Does not apply, since the entire switchgear needs to be evaluated.   |
| 10.2.7 Inscriptions  |  | Meets the product standard's requirements.   |
| 10.3 Degree of protection of ASSEMBLIES  |  | Does not apply, since the entire switchgear needs to be evaluated.   |
| 10.4 Clearances and creepage distances   |  | Meets the product standard's requirements.   |
| 10.5 Protection against electric shock   |  | Does not apply, since the entire switchgear needs to be evaluated.   |
| 10.6 Incorporation of switching devices and components   |  | Does not apply, since the entire switchgear needs to be evaluated.   |
| 10.7 Internal electrical circuits and connections  |  | Is the panel builder's responsibility.   |
| 10.8 Connections for external conductors   |  | Is the panel builder's responsibility.   |
| 10.9 Insulation properties   |  |  |
| 10.9.2 Power-frequency electric strength   |  | Is the panel builder's responsibility.   |
| 10.9.3 Impulse withstand voltage   |  | Is the panel builder's responsibility.   |
| 10.9.4 Testing of enclosures made of insulating material   |  | Is the panel builder's responsibility.   |
| 10.10 Temperature rise   |  | The panel builder is responsible for the temperature rise calculation. Eaton will provide heat dissipation data for the devices. |

|                                     |  |  |
|-------------------------------------|--|--|
| 10.11 Short-circuit rating          |  | Is the panel builder's responsibility. The specifications for the switchgear must be observed.           |
| 10.12 Electromagnetic compatibility |  | Is the panel builder's responsibility. The specifications for the switchgear must be observed.           |
| 10.13 Mechanical function           |  | The device meets the requirements, provided the information in the instruction leaflet (IL) is observed. |

## Technical data ETIM 7.0

Low-voltage industrial components (EG000017) / Handle for power circuit breaker (EC000229)

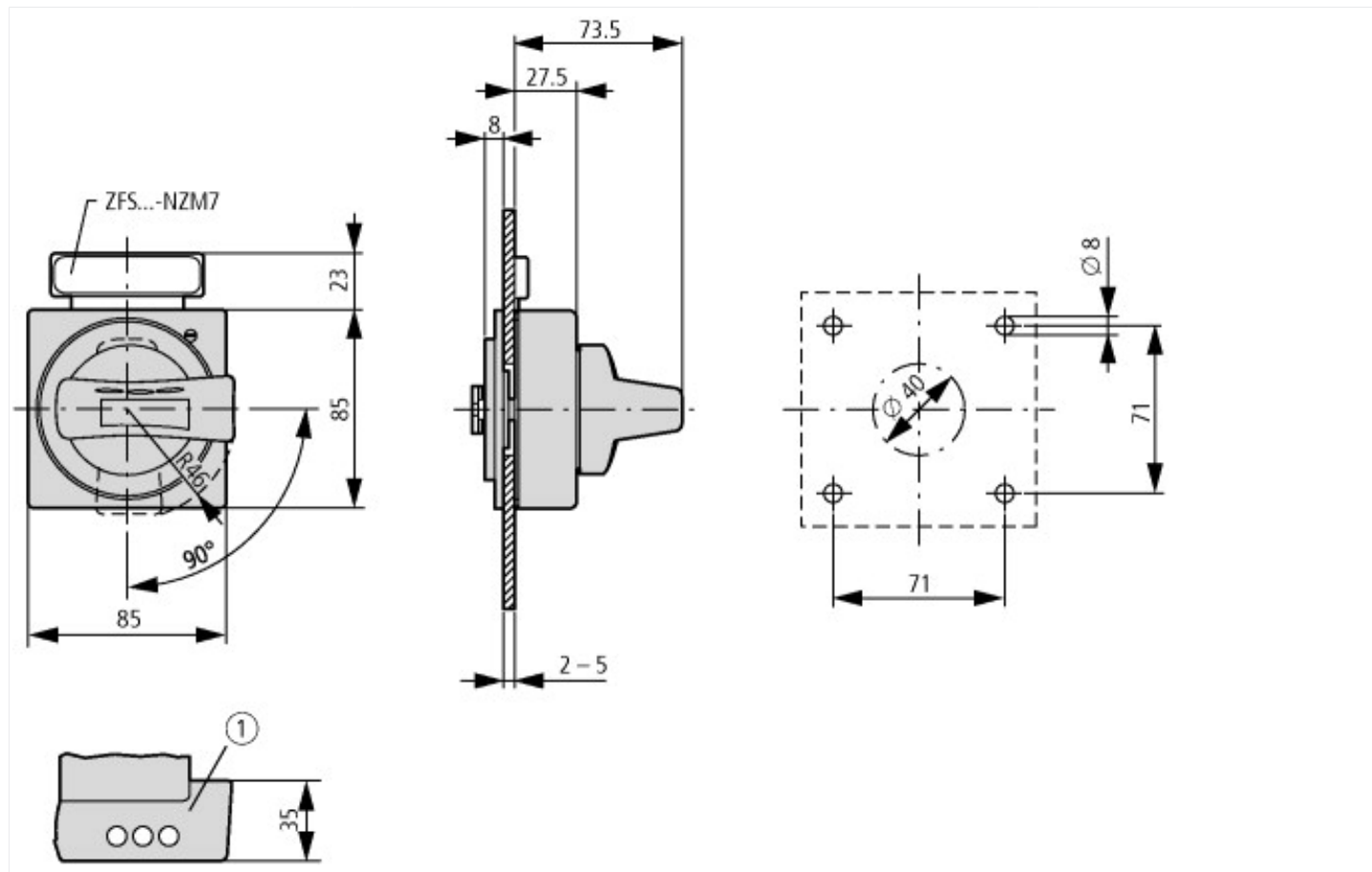
Electric engineering, automation, process control engineering / Low-voltage switch technology / Circuit breaker (LV < 1 kV) / Handle for switch devices (ecl@ss10.0.1-27-37-04-14 [AKF012014])

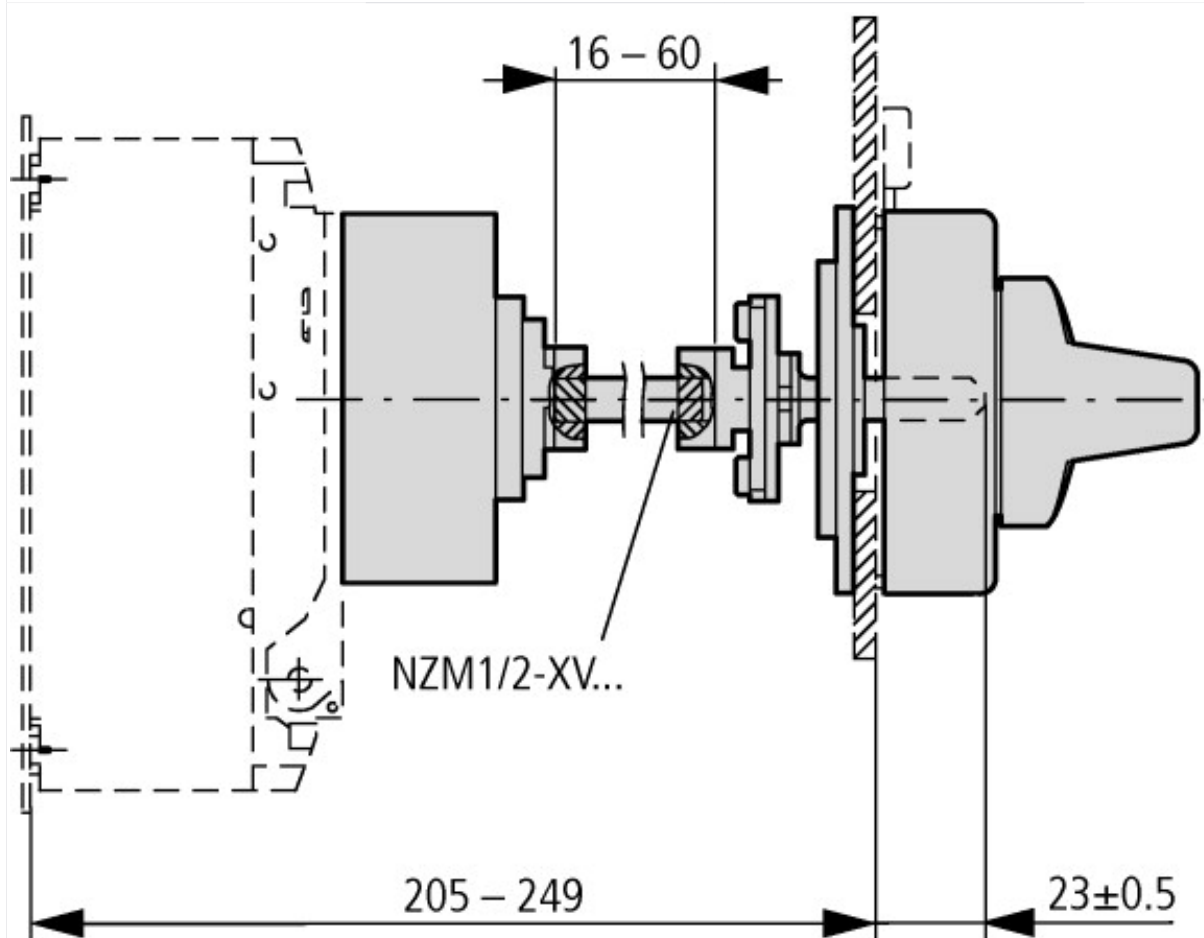
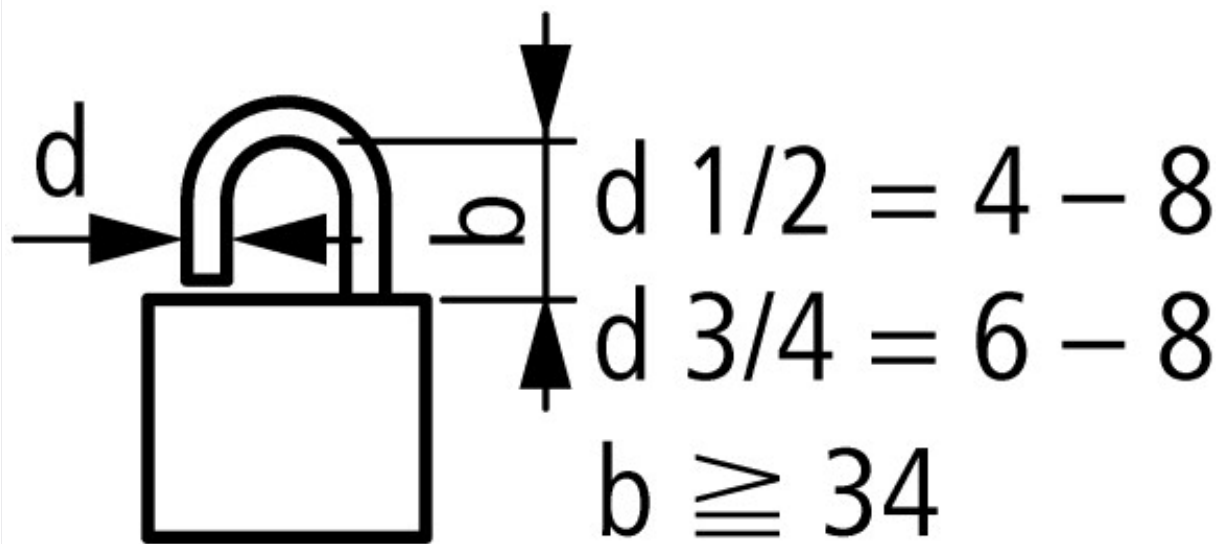
|                                    |  |     |
|------------------------------------|--|-----|
| Lockable                           |  | Yes |
| Colour                             |  | Red |
| Suitable for emergency stop        |  | Yes |
| With extension shaft               |  | No  |
| Suitable for power circuit breaker |  | Yes |
| Suitable for switch disconnecter   |  | Yes |

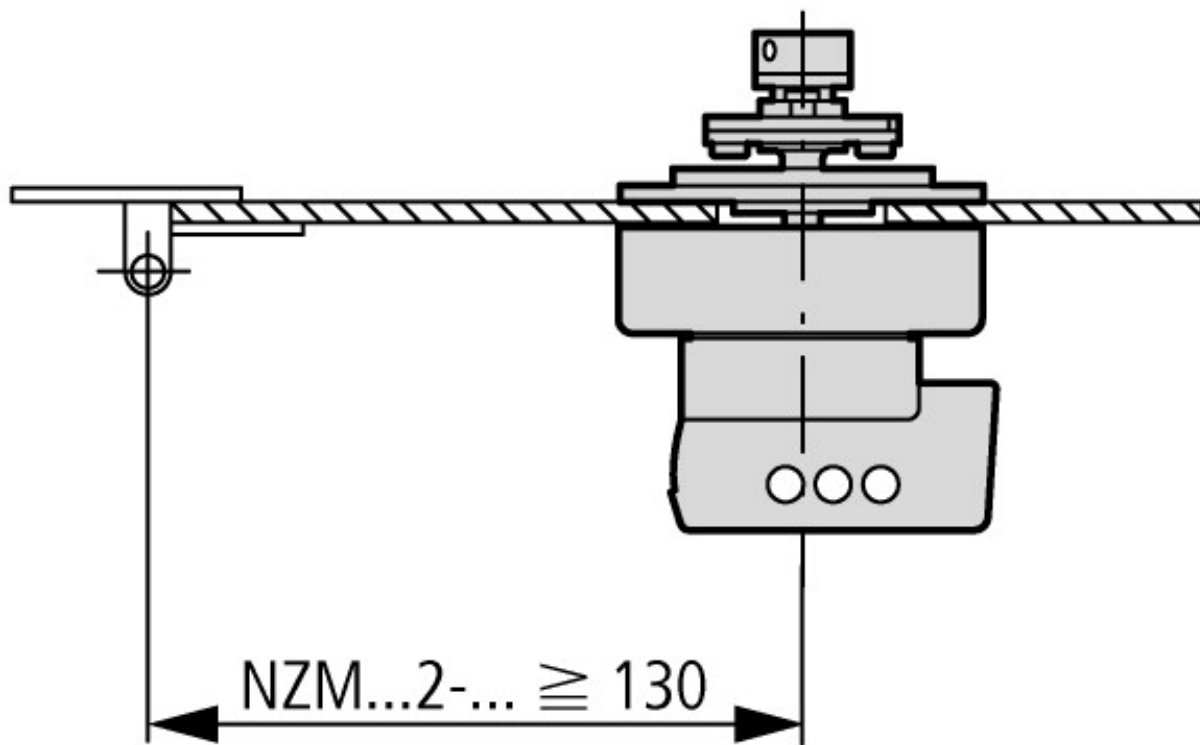
## Approvals

|                             |  |   |
|-----------------------------|--|---|
| Product Standards           |  | UL489; CSA-C22.2 No. 5-09; IEC60947, CE marking |
| UL File No.                 |  | E140305   |
| UL Category Control No.     |  | DIHS  |
| CSA File No.                |  | 022086  |
| CSA Class No.               |  | 1437-01   |
| North America Certification |  | UL listed, CSA certified                        |
| Degree of Protection        |  | IEC: IP66, UL/CSA Type 4X, 12                   |

## Dimensions







Minimum door coupling rotary handle clearance from door pivot point

## Additional product information (links)

### IL01203005Z (AWA1230-1998) Door coupling rotary handle

IL01203005Z (AWA1230-1998) Door coupling rotary handle

[https://es-assets.eaton.com/DOCUMENTATION/AWA\\_INSTRUCTIONS/IL01203005Z2019\\_03.pdf](https://es-assets.eaton.com/DOCUMENTATION/AWA_INSTRUCTIONS/IL01203005Z2019_03.pdf)

IL01203005Z (AWA1230-1998) Door coupling rotary handle

[https://es-assets.eaton.com/DOCUMENTATION/AWA\\_INSTRUCTIONS/IL01203005Z2021\\_01.pdf](https://es-assets.eaton.com/DOCUMENTATION/AWA_INSTRUCTIONS/IL01203005Z2021_01.pdf)