


Float switch

Part no.	SW
Catalog No.	088594
Alternate Catalog No.	SW
EL-Nummer (Norway)	4356150

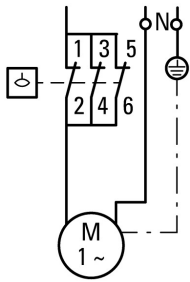
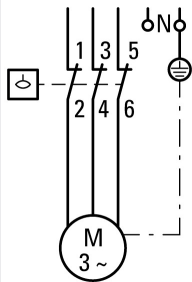
Delivery program

Product range			Float switch
Degree of Protection			IP65
			Lever can be turned to reverse contact effect
			1 insulated protective conductor terminal 
			1 insulated N terminal
			Impact-resistant shroud, green
			2 cable entry knockouts for M20, without cable gland
			IP65 in conjunction with V-M20 cable gland
			Wall mounting bracket
			Can be mounted in any position

Notes

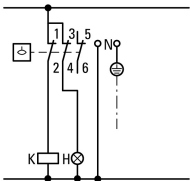
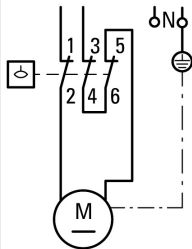
For use as a motor load switch for:
Three-phase current AC-3

Single-phase current



Direct current DC

For use as control switch:



Parts:

Float, operating rod, and wire rope sleeve made of especially resistant plastic.
Resistant to:

- Tap water, river water, salt water: Max. 100 °C
- Deionized water: Max. 100 °C
- Brine: Max. 100 °C
- Acids (10%): Max. 40 °C
- Bases (10%): Max. 40 °C

Operation:

Minimum operation at lever: 24 mm

Technical data

Standards		IEC/EN 60947-4-1
Operating frequency	Operations/h	≤ 1500
Ambient temperature		-25 - 70
Degree of Protection		IP65
Mounting position		As required

Mechanical shock resistance to IEC 60068-2-27	Half-sinusoidal shock 20 ms	g	> 10
Vibration resistance acc. to IEC/EN 60068-2-6	Amplitude 1 mm	Hz	36
lifespan	Operations	x 10 ⁶	0.5
Terminal capacities		mm ²	
Solid		mm ²	1 x (0.75 - 2.5) 2 x (0.75 - 1.5)
Flexible with ferrules to DIN 46228		mm ²	1 x (0.5 - 1.5) 2 x (0.5 - 1.5)
Terminations			Flat terminal with clamping washer
Terminal screw			M4
Tightening torque of terminal screw		Nm	1.2

Contacts/switching capacity

Rated impulse withstand voltage	U _{imp}	V AC	4000
Rated insulation voltage	U _i	V	400
Overvoltage category/pollution degree			III/3
Max. short-circuit protective device			
Fuseless		Type	PKZM0-20
Fuse	gG/gL	A	20
Type of coordination			1
Rated short-circuit current	I _q (= Current r)	kA	1
AC-3			
Rated operational current			
230 V		A	15
400 V		A	11.5
Rated power P			
230 V		kW	4
400 V		kW	5.5
Rated frequency	f	Hz	50
Impedance per pole		mΩ	1.68

Design verification as per IEC/EN 61439

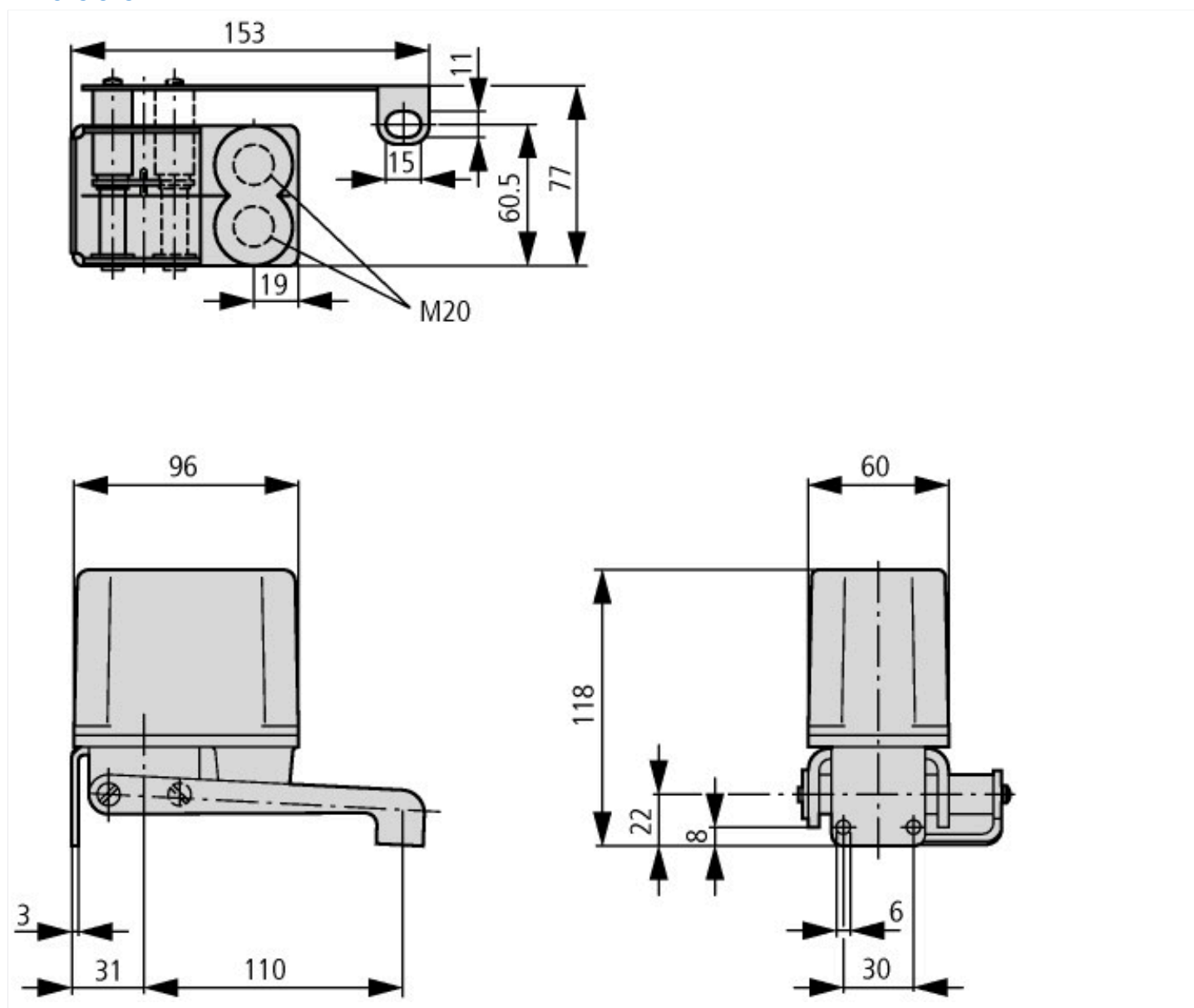
Technical data for design verification			
Operating ambient temperature min.		°C	-25
Operating ambient temperature max.		°C	70

Technical data ETIM 8.0

Stats, switches and controllers (EG015840) / Float switch (EC011178)			
Electric engineering, automation, process control engineering / Binary sensor technology, safety-related sensor technology / Level switch / Float switch (ecl@ss10.0.1-27-27-32-01 [AKE672013])			
Suitable for potable water			Yes
Suitable for rainwater			Yes
Suitable for cooling water			Yes
Suitable for faeces			No
Suitable for domestic wastewater			Yes
Suitable for condensate			Yes
Suitable for glycol			No
Measuring range		mm	
Readable			No
With display			No
Adjustable differential gap			Yes
Differential range/switch hysteresis		mm	
Immersing depth		mm	
Vertical mounting			Yes
Horizontal mounting			Yes

Sensor/feeler type		Sinking ball
Mounting method		Suspended above the pit
Material float		Plastic
Float diameter	mm	198.5
Connection		External thread metric
Thread size		Other
Max. contact voltage	V	400
Max. contact load	A	15
Max. medium temperature (continuous)	°C	100
Min. specific density of liquid	kg/m ³	
Max. operating pressure	bar	
Degree of protection (IP)		IP65
Degree of protection (NEMA)		Other
Explosion-proof		No

Dimensions



Additional product information (links)

IL05212002Z (AWA133-135) Float switch

IL05212002Z (AWA133-135) Float switch

https://es-assets.eaton.com/DOCUMENTATION/AWA_INSTRUCTIONS/IL05212002Z2021_08.pdf